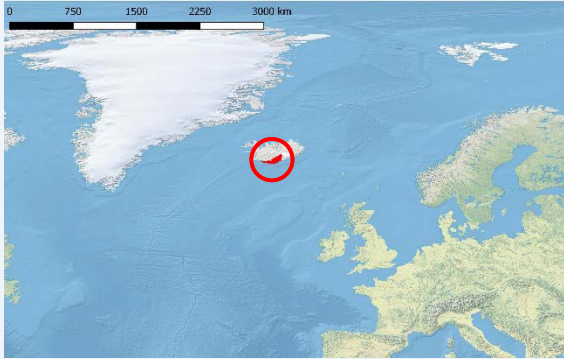


Evacuation & education



Awareness-raising tools & practices:

- Educational materials (brochures, Evacuation plans)
- Community engagement
- Workshops / Training
- Campaigns / social media



Katla UNESCO Global Geopark
Iceland

Iceland has a combination of potential triggers of natural hazards: located on the Mid-Atlantic Ridge where tectonic plates actively separate accompanied by an upwelling of magma, the Iceland mantle plume, inconveniently situated under Europe's largest glacier, giving life to numerous other glacier-covered volcanos. Earthquakes and volcanic eruptions producing tephra clouds, lava flows and/or sub-glacial eruptions causing glacial floods (jökulhlaup) are a constant threat to the local community in Katla Geopark, claiming lives and disrupting communities. Today, building regulations take large earthquakes and flood zones into consideration, drastically reducing damage to buildings. The Icelandic Met Office closely monitors seismic activity, working closely with the Police and Department of Civil Protection and Emergency Management, who update evacuation plans for different hazards in different areas. They organize and practice educational activities with schools and the local community of municipalities. "Safe Travel" informs travelers about occurring natural hazards via TV-monitors situated in service- and information centers. A rescue team of trained volunteers is on call 24h all-year round, in all parts of the country, ready to assist police with evacuation, search and crowd control. In the event of natural hazards, psychological first aid is offered by the Red Cross for people in distress.



© UNESCO / Ámi Sigurdsson

More Information

www.katlageopark.com
info@katlageopark.is



© Katla UNESCO Global Geopark

