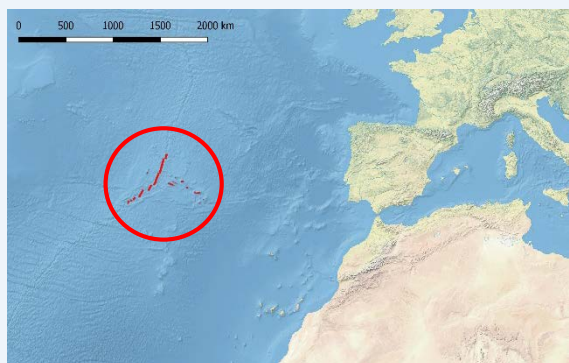


## Educational activities for population & students



**GEOPARQUE CORES** Açores UNESCO Global Geopark  
Açores, Portugal



### Awareness-raising tools & practices:

- Educational materials (flyers, posters, brochures)
- Community engagement
- Workshops / Training
- Campaigns / social media

The Azores archipelago is located in the North Atlantic Ocean between the European and American continents. It is formed by nine oceanic volcanic islands and a few islets situated at the Azores Triple Junction, at the boundary of the American, Eurasian and Nubian lithospheric plates. This complex geological setting explains the significant seismic and volcanic activity (including secondary volcanism and degassing processes), registered in the archipelago. Severe landslides triggered by extreme meteorological conditions and/or coastal erosion, earthquakes and volcanic eruptions frequently affect the islands. In addition, tsunamis related to earthquakes and landslides have been reported. Due the geological hazards, that the Azorean population is exposed to, it is extremely important to evaluate the probability of an occurrence of any given phenomenon and to analyze its consequences and provide knowledge that allows for improved coexistence of the population with the associated risks. The Azores UNESCO Global Geopark therefore engages in awareness-raising actions aimed at the general public and schools as part of its environmental education programme carried out by partners throughout the islands of the Azores.



© Azores UNESCO Global Geopark

### More Information

<http://azores.geopark.com>  
[geral@azoresgeopark.com](mailto:geral@azoresgeopark.com)

