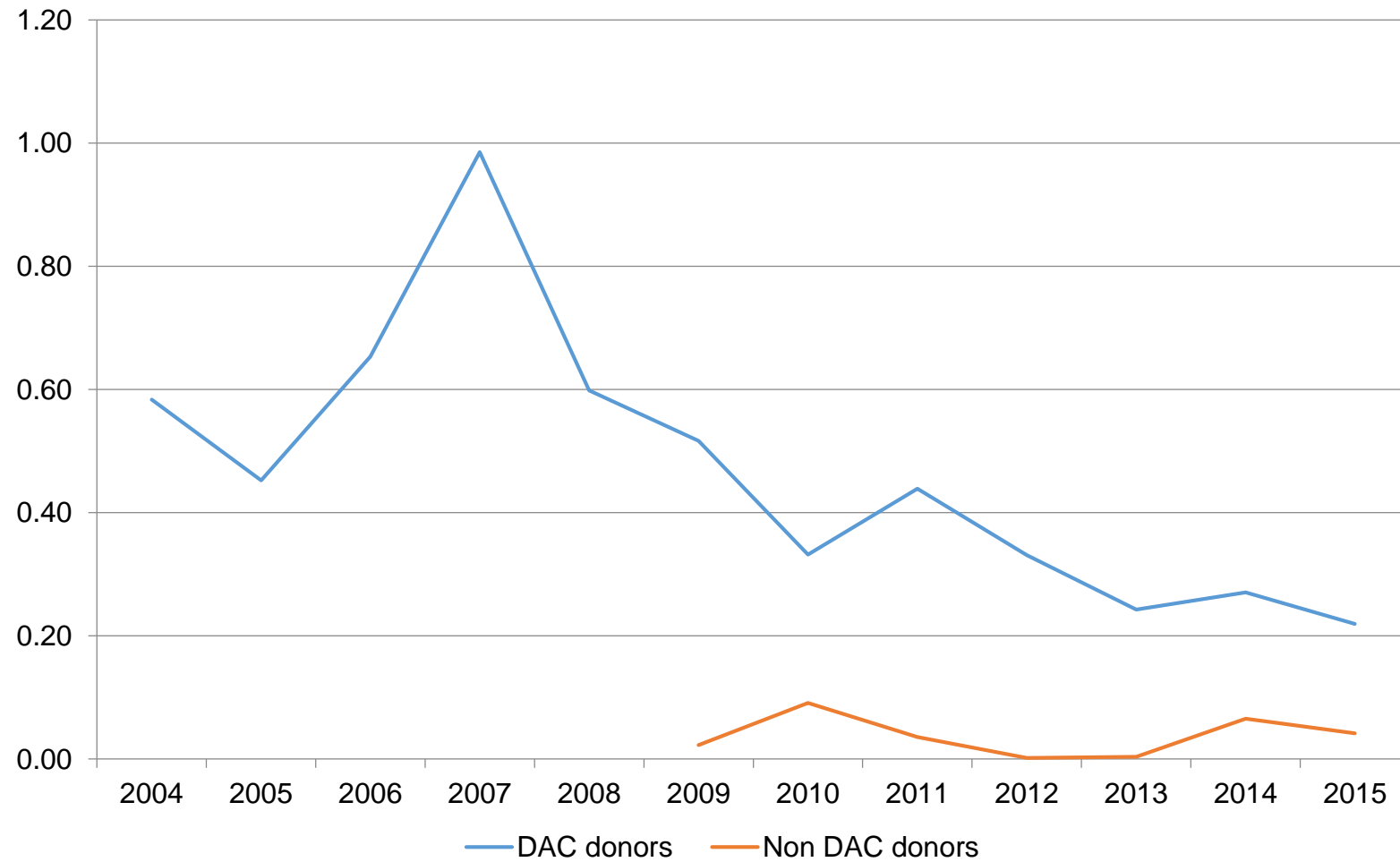


# Sustainable Development

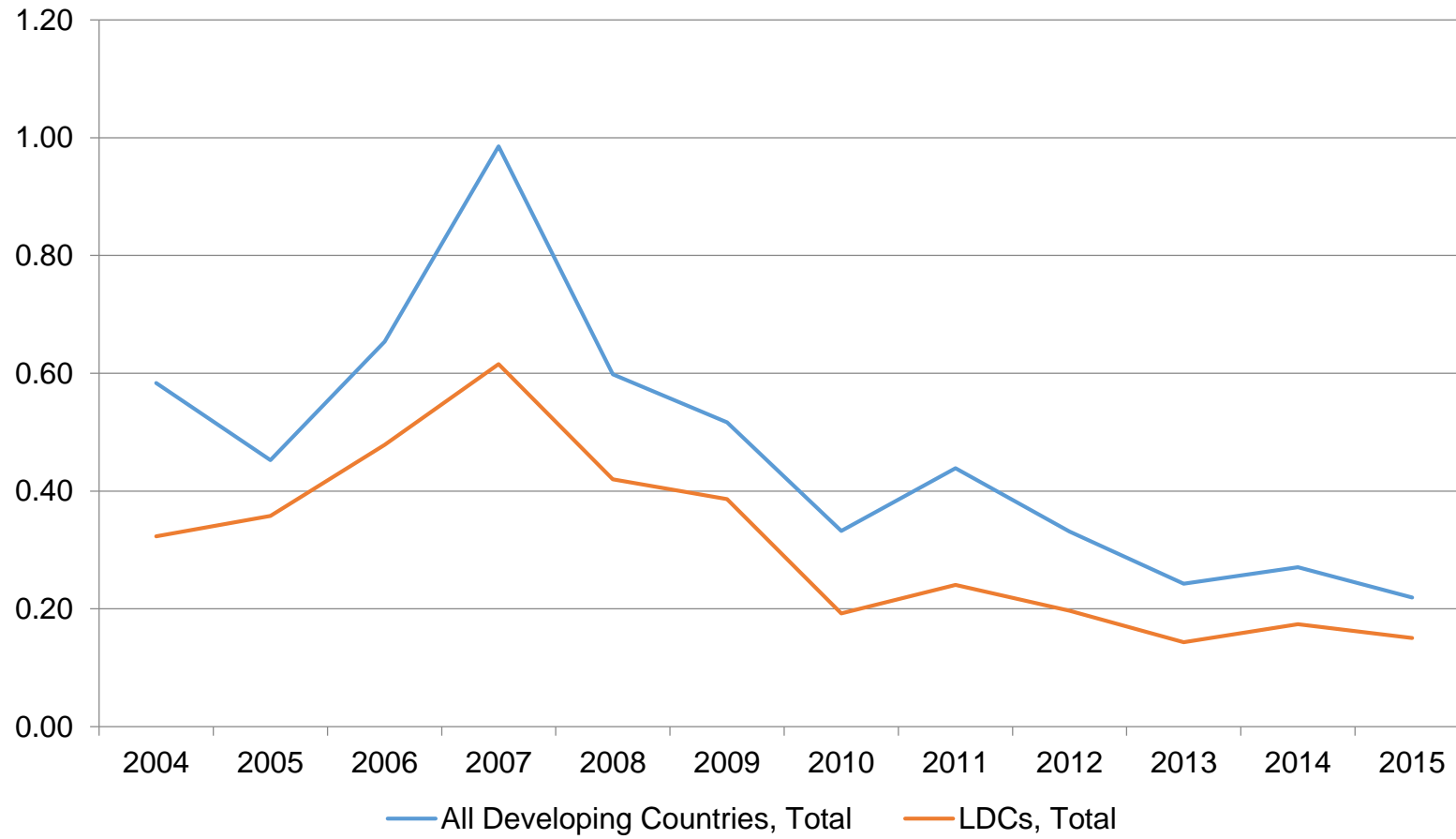
# Still in process...

- Content analysis of National Development Plans for references to culture
- Identification of national and international evaluations of culture and sustainable development programmes
- Identification of case studies (particularly local and/or rural) of innovative or effective programmes (Agenda 21, WCCF, other 2017 report data sources)

## Share of cultural ODA as a proportion of total ODA given by donor countries (2004-2015)

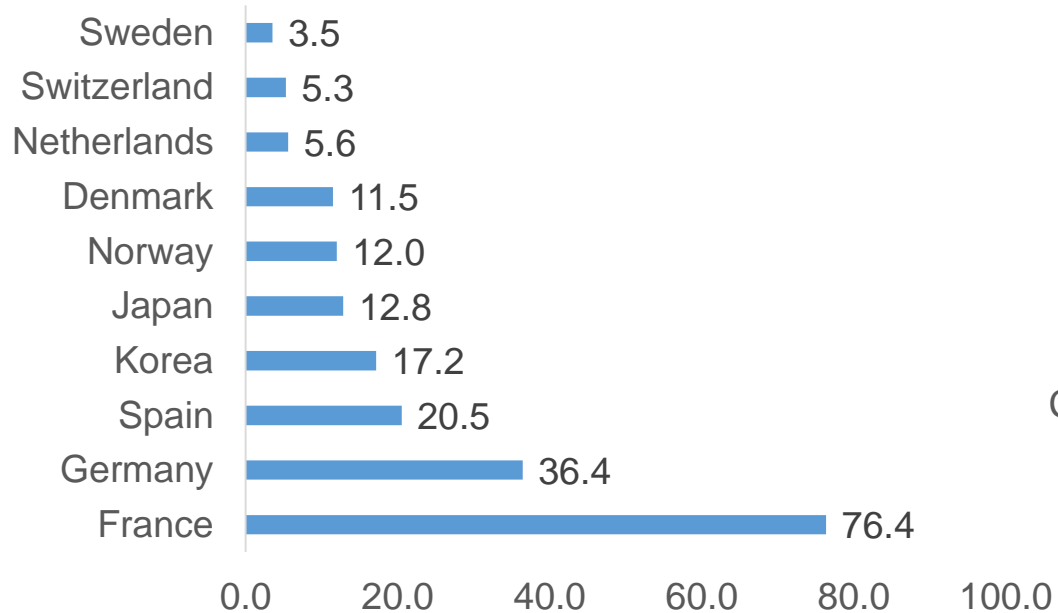


## Share of cultural ODA as a proportion of total ODA received by developing countries (2004-2015)

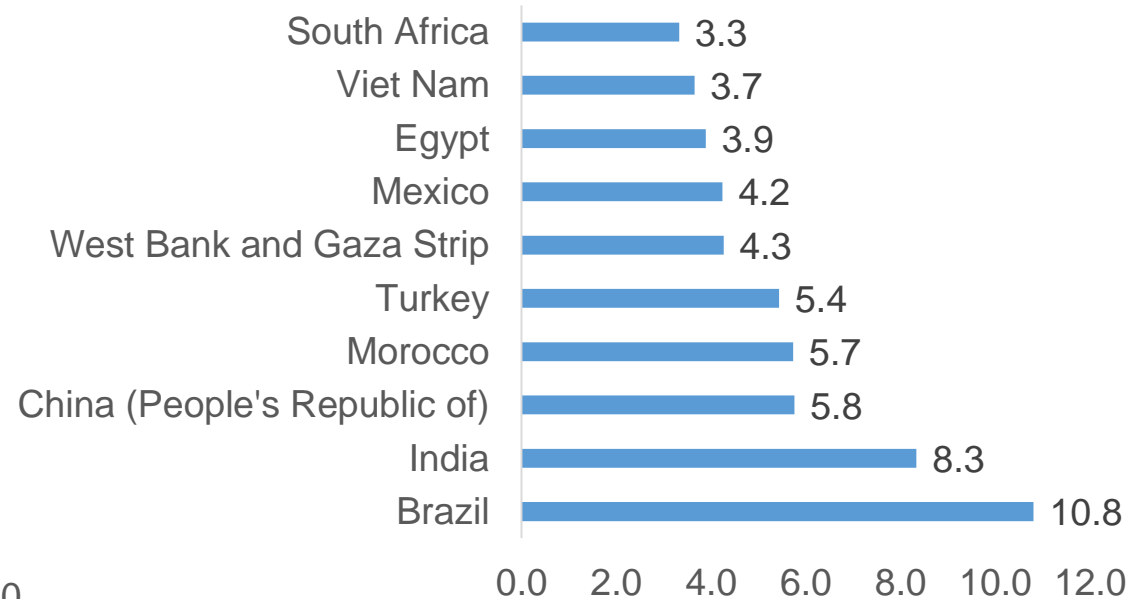


## Share of cultural ODA as a proportion of total ODA received by developing countries (2004-2015)

Top ten donors of cultural ODA in 2015  
(USD millions)

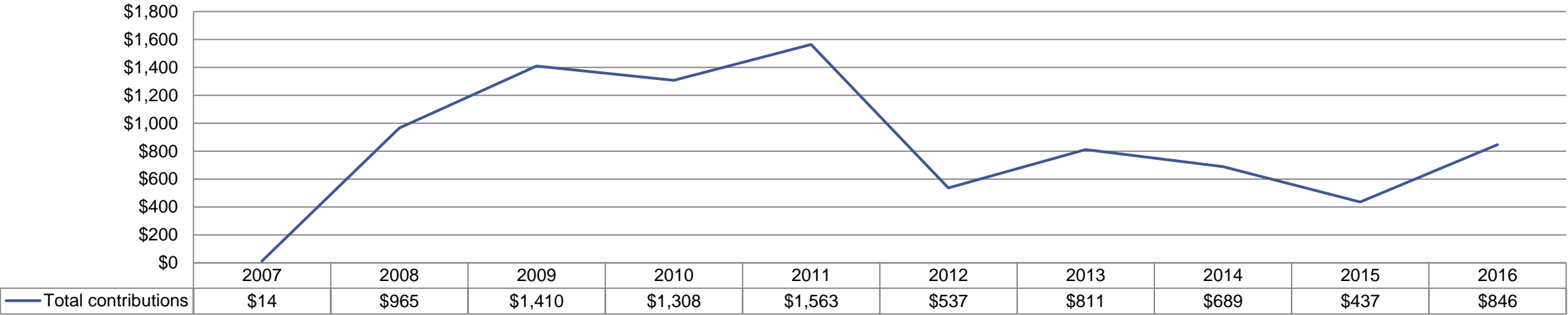


Top ten recipients of cultural ODA in 2015  
(USD millions)



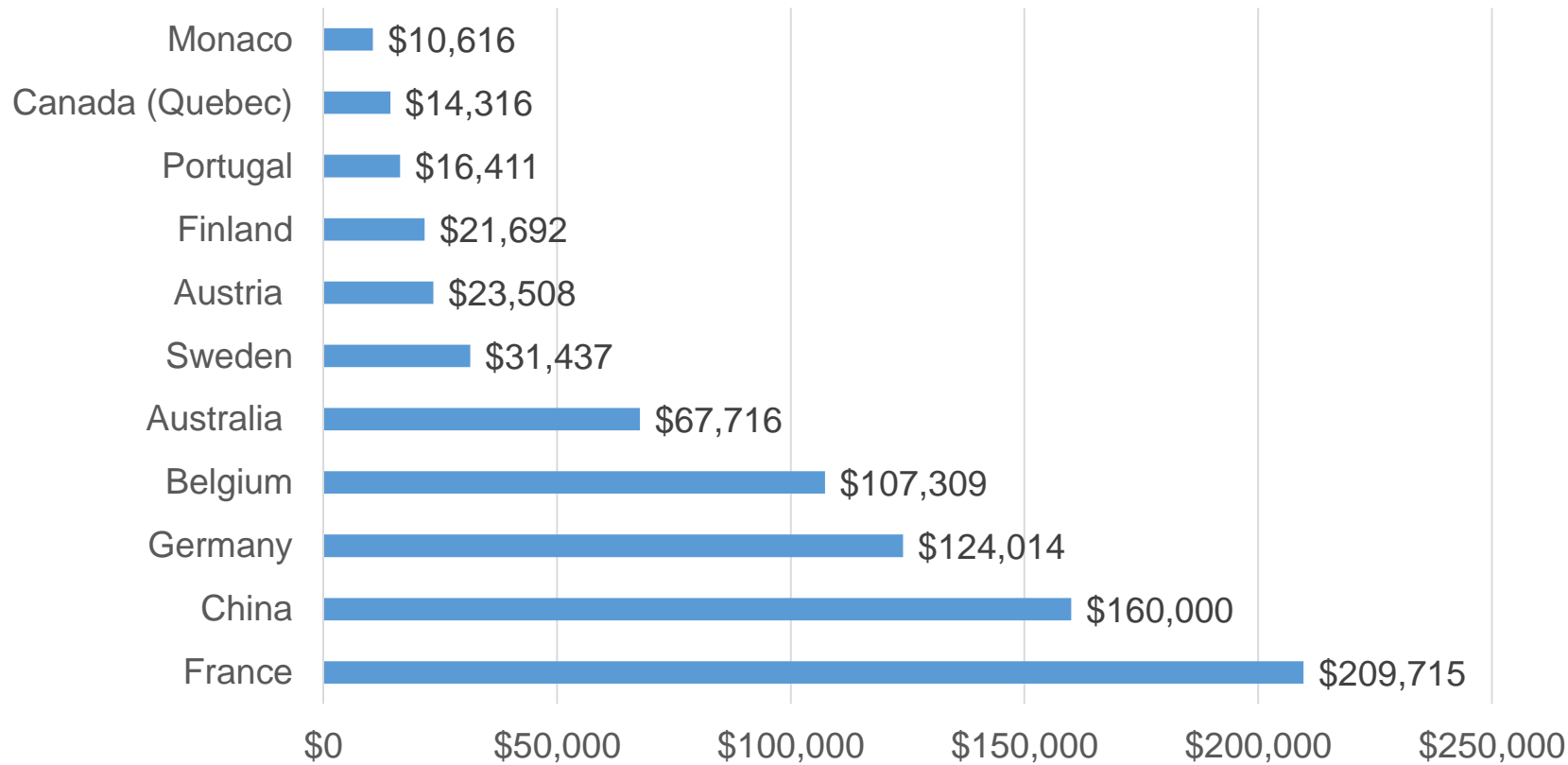
# Contributions to International Fund for Cultural Diversity (2007-2016)

**Total received contributions to the IFCD 2007-2016 (in US\$1,000, current price)**



## Contributions to International Fund for Cultural Diversity (2016)

Largest contributions to IFCD in 2016



New contributions in 2016:

- Belize
- Bulgaria / Bulgarie
- Cambodia / Cambodge
- El Salvador
- Grenada / Grenade
- Guinea / Guinée
- Haiti
- Jamaica / Jamaïque
- Paraguay
- Togo
- Viet Nam